

FED. ROAD DIST. NO.	STATE	PROJECT NO.	FISCAL YEAR	SHEET NO.	TOTAL SHEETS
6	ARK.				
STATE JOB NO. 10307					

INDEX OF SHEETS

Sheet No.	Drawg. No.	Description
1.	G748	Title Sheet Job No. 10307.
2.	G749	Summary Sheet Job No. 10307.
3.	G750	Layout Bridge No. 2474.
4.	2027	Details of Standard 15' Timber Spar.
5.	G751	Details of Bents 15 to 23.
6.	G752	Details of 30'-I-Beam Spans.

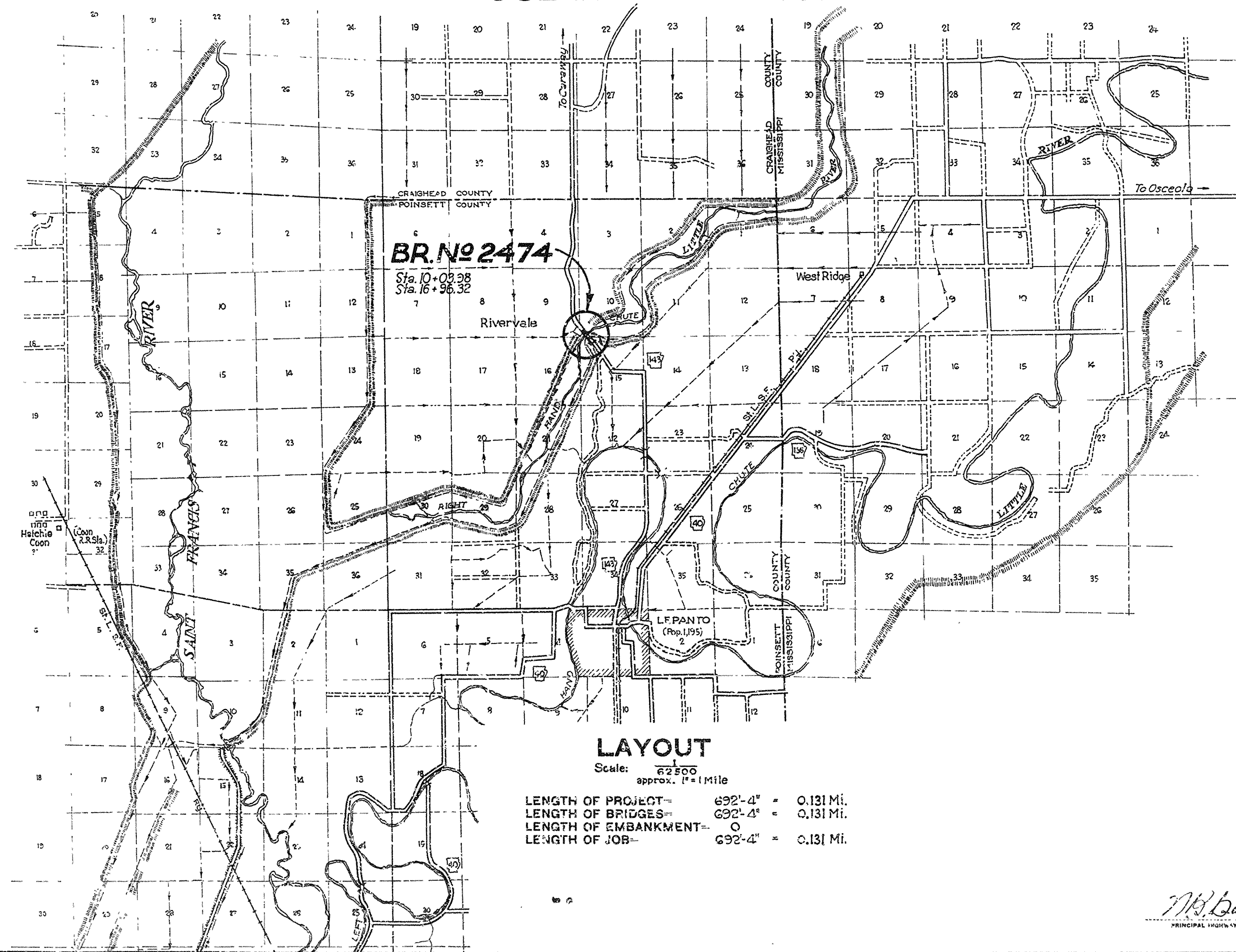
STATE OF ARKANSAS
STATE HIGHWAY COMMISSION

PLAN OF PROPOSED BRIDGE
OVER
RIGHT HAND CHUTE OF LITTLE RIVER
LEPANTO-CARAWAY ROAD
POINSETT COUNTY
ROUTE 143 SEC. 1
JOB NO 10307

SPECIFICATIONS: ARKANSAS STATE HIGHWAY COMMISSION
STANDARD SPECIFICATIONS FOR ROAD AND BRIDGE CONSTRUCTION
ADOPTED MARCH 1, 1940 WITH THE SPECIAL PROVISIONS LISTED BELOW

PAMPHLETS	
DIVISION	PART
I	
II	2b, 6c
III	
IV	

No.	SPECIAL PROVISIONS TITLE	No. SHEETS
	State License for Contractors	1
2-1	Revision of Article 2.11	2
2-2	Equipment List Required	1
4-1	Revision of Article 4.9	1
8-2	Employment of Labor	1
9-5	Part 9.5.1.1	1
9-6	Part 9.6.1.1	1
807-4	Revision of Article 807.29	1
809-4	Revision of Article 809.22	2
850-1	Engineer's Field Office	1
10307	Fabrication and Erection of Structural Steel I-Beams on Hand	1
10307	Driving Timber Piling on Hand	1
10307	Revision of Section 807	1



LAYOUT
Scale: 1" = 1 Mile
LENGTH OF PROJECT= 692'-4" = 0.131 Mi.
LENGTH OF BRIDGES= 692'-4" = 0.131 Mi.
LENGTH OF EMBANKMENT= 0
LENGTH OF JOB= 692'-4" = 0.131 Mi.

M. B. Basser
PRINCIPAL HIGHWAY ENGINEER (BRIDGE)

BRIDGE No. 2474

DRAWING No. 6748

APPROVED
CHIEF ENGINEER-STATE HIGHWAY COMMISSION

APPROVED
DISTRICT ENGINEER
PUBLIC ROADS ADMINISTRATION
FEDERAL WORKS AGENCY

RECOMMENDED FOR APPROVAL
DISTRICT ENGINEER
PUBLIC ROADS ADMINISTRATION
FEDERAL WORKS AGENCY

APPROVED
COMMISSIONER
PUBLIC ROADS ADMINISTRATION
FEDERAL WORKS AGENCY

FED. ROAD DIST. NO.	STATE	PROJECT NO.	FISCAL YEAR	SHEET NO.	TOTAL SHEETS
6	ARK.				
STATE JOB NO. 10307				2	4

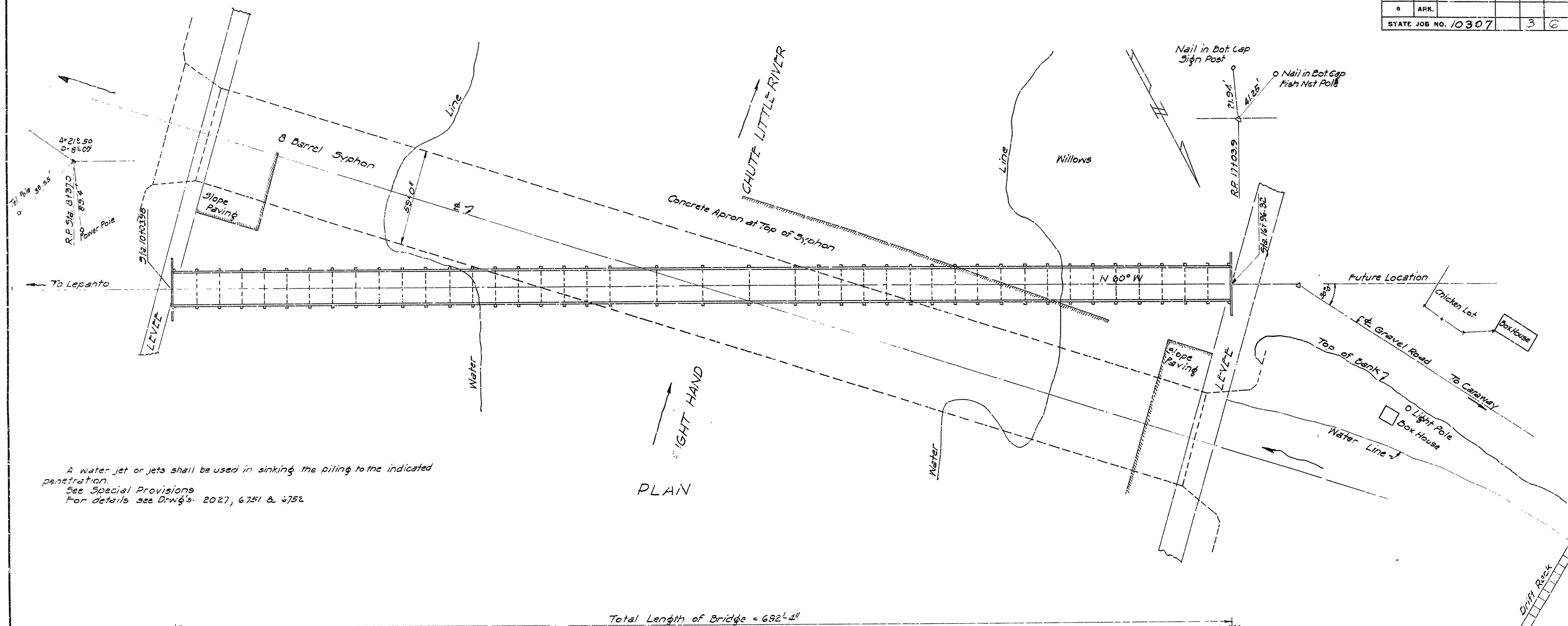
SUMMARY OF BRIDGE QUANTITIES

Item No	Item	Unit	Bents No 1 & 43	Bents 2-14 Incl. 30-42 Incl	Bents 15 & 29	Bents 16 & 28	Bents 17 & 27	Bents 18 & 26	Bents 19 & 25	Bents 20 & 24	Bents 21 - 23 Incl.	Spans 1 & 42	Spans 2-18 Incl. 25-41 Incl.	Spans 19 & 24	Spans 20-23 Incl.		Total
5P&B07	Structural Steel in Beam Spans	Lb.													4,100		4,100
5P&B07	Fabrication and Erection of Structural Steel I-Beams on Hand	Lb.													26,300		26,300
5PB.809	Untreated Bridge Timber	M.F.B.M.										5.660	87.720	5.168	18.152		116.700
5P&B09	Treated Bridge Timber	M.F.B.M.	1.436	9.943	1.128	1.320	1.932	2.352	2.544	3.202	5.043						28.900
5P&B10	Driving Timber Piling on Hand	Lin.Ft.	480	4220	270	270	180	90	90								5600

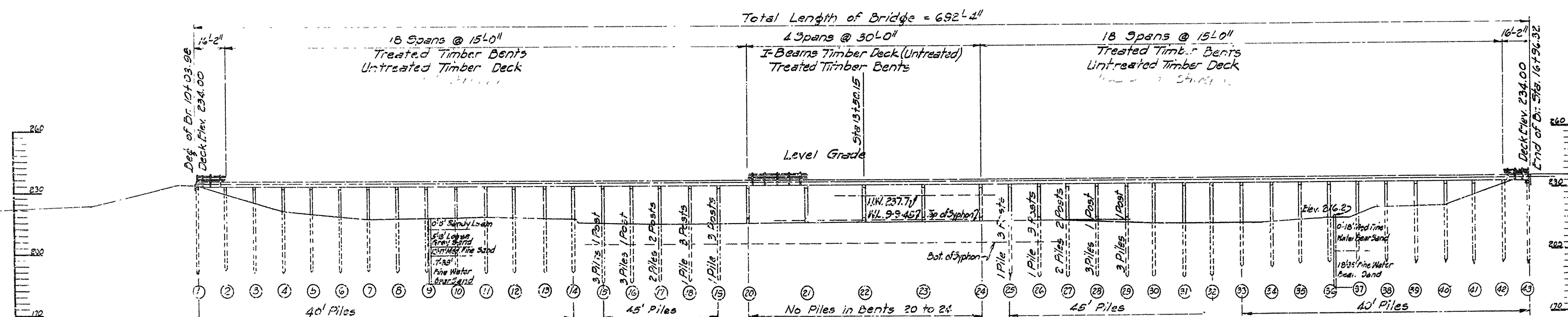
SUMMARY OF QUANTITIES
BRIDGE OVER RIGHT HAND CHUTE LITTLE RIVER
LEPANTO-CARAWAY ROAD
POINSETT COUNTY
ROUTE 123 SEC 1
ARKANSAS STATE HIGHWAY COMMISSION
LITTLE ROCK, ARK.
Drawn By: L.P.C. Date: 3-18-45
Traced By: L.A.M. Date: 9-18-45
Checked By: _____ Date: _____
Scale: _____ in. = ft.
BRIDGE NO. 2474 DRAWING NO. 6745

W.B. Danner
PRINCIPAL HIGHWAY ENGINEER (BRIDGE)

FED. ROAD DIST. NO.	STATE	PROJECT NO.	FISCAL YEAR	SHEET NO	TOTAL SHEETS
6	ARK.				
STATE JOB NO. 10307				3	6



A water jet or jets shall be used in sinking the piling to the indicated penetration.
See Special Provisions
For details see Draw'gs. 2027, 6751 & 6752



B. M. Top West End N. H. Wall Siphon
Elev. 225.15

LAYOUT OF BRIDGE ACROSS
RIGHT HAND CHUTE LITTLE RIVER
LEPANTO-CARAWAY
POINSETT COUNTY
ROUTE 143 SEC. 1

ARKANSAS STATE HIGHWAY COMMISSION
LITTLE ROCK, ARK.

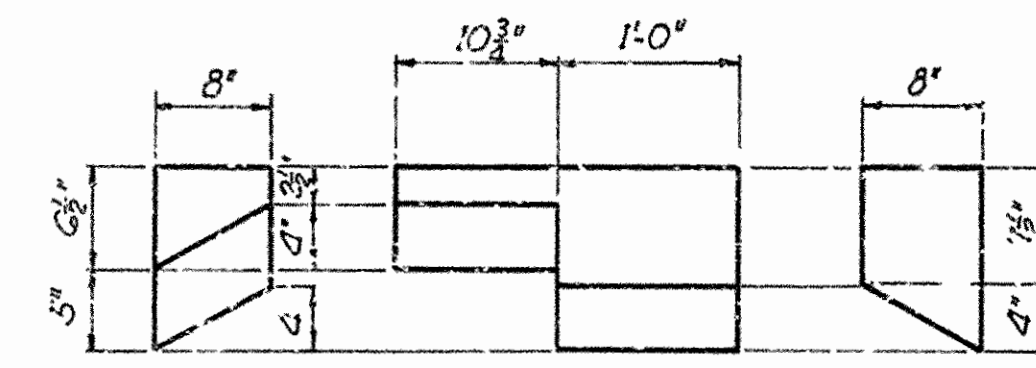
Drawn By: L.A.Mc Date: 9-13-45
Traced By: L.A.Mc Date: 9-16-45
Checked By: _____ Date: _____

Scale: 1 in. = 30 ft.

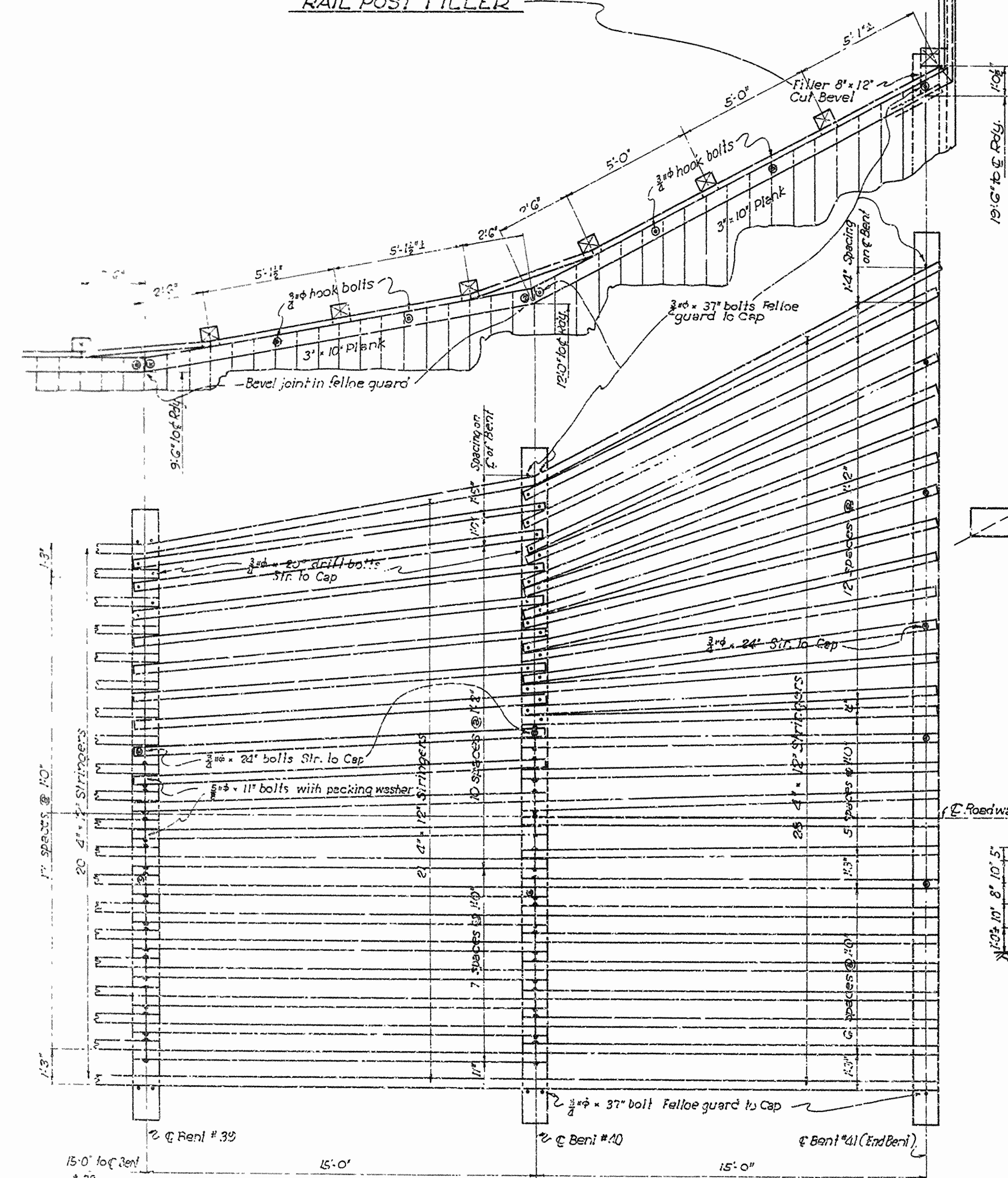
Checked By: _____ Date: _____
BRIDGE NO. 2474 DRAWING NO. 6750

N.B. Lauer
PRINCIPAL HIGHWAY ENGINEER (BRIDGE)

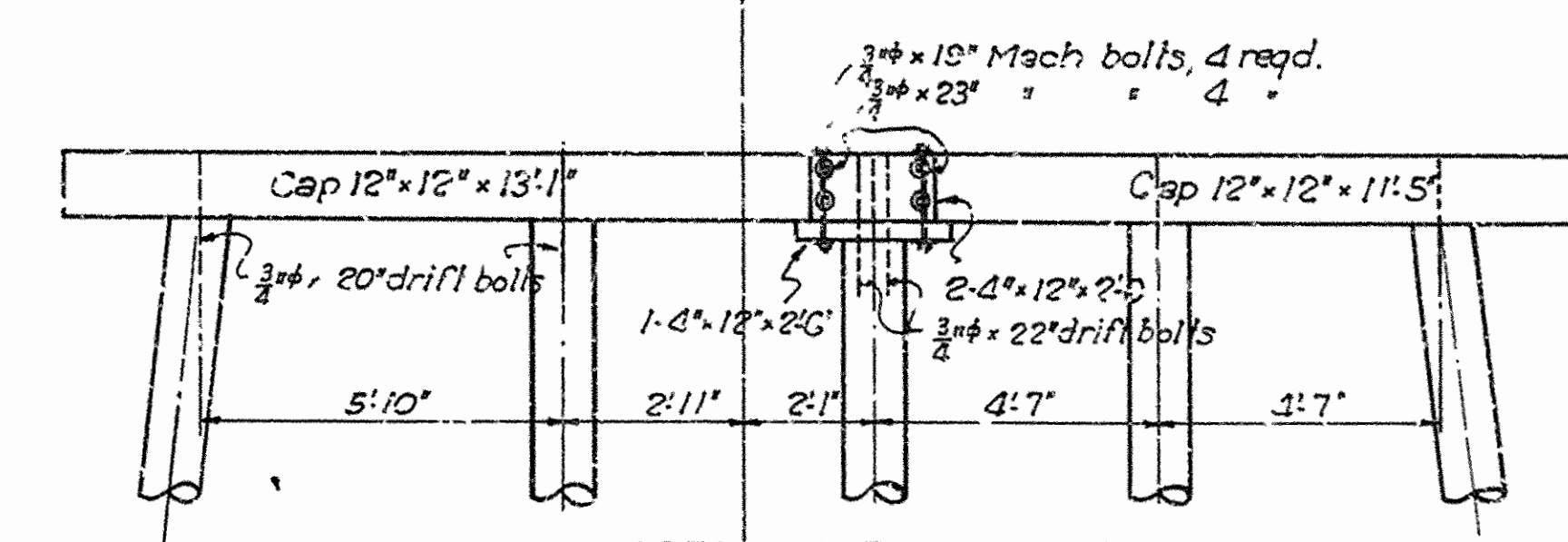
FED. ROAD DIST. NO.	STATE	PROJECT NO.	FISCAL YEAR	SHEET NO.	TOTAL SHEETS
8	ARK.				
STATE JOB NO. 4307					



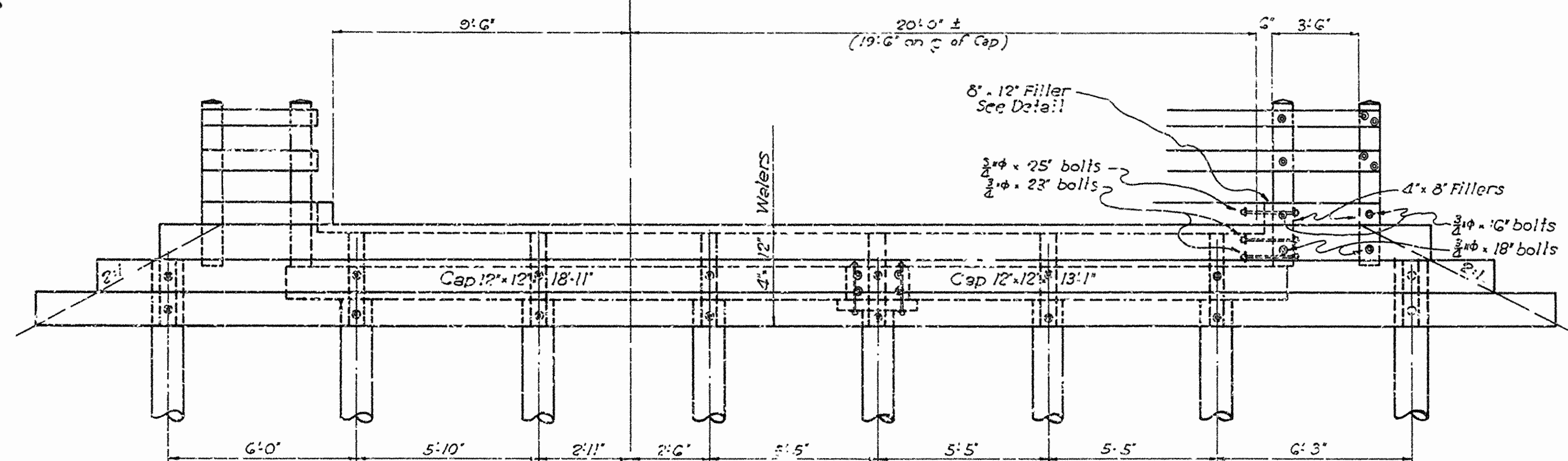
RAIL POST FILLER



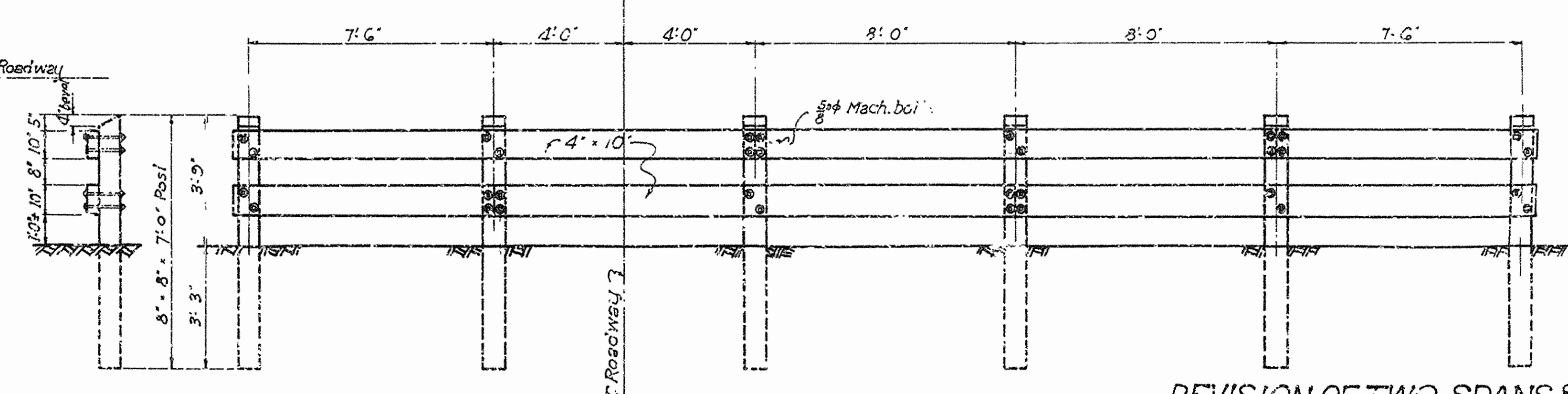
PLAN OF SPANS AT NORTH END



ELEVATION BENT N°40



ELEVATION END BENT N°41



DETAIL OF GUARD FENCE

REVISION OF TWO SPANS & TWO BENTS
AT NORTH END OF BRIDGE
RIGHT HAND CHUTE OF LITTLE RIVER
LEPANTO-CARAWAY ROAD
POINSETT COUNTY
ROUTE 143 SEC. 1

ARKANSAS STATE HIGHWAY COMMISSION
LITTLE ROCK, ARK.
Drawn By: E.A.W. Date: 12-7-45
Traced By: E.A.W. Date: 12-11-45
Checked By: _____ Date: _____
BRIDGE NO. 2474 DRAWING NO. 6750A
Scale: 3/8" in. = 1 ft.